

Smart Plug In

for
MySQL Databases

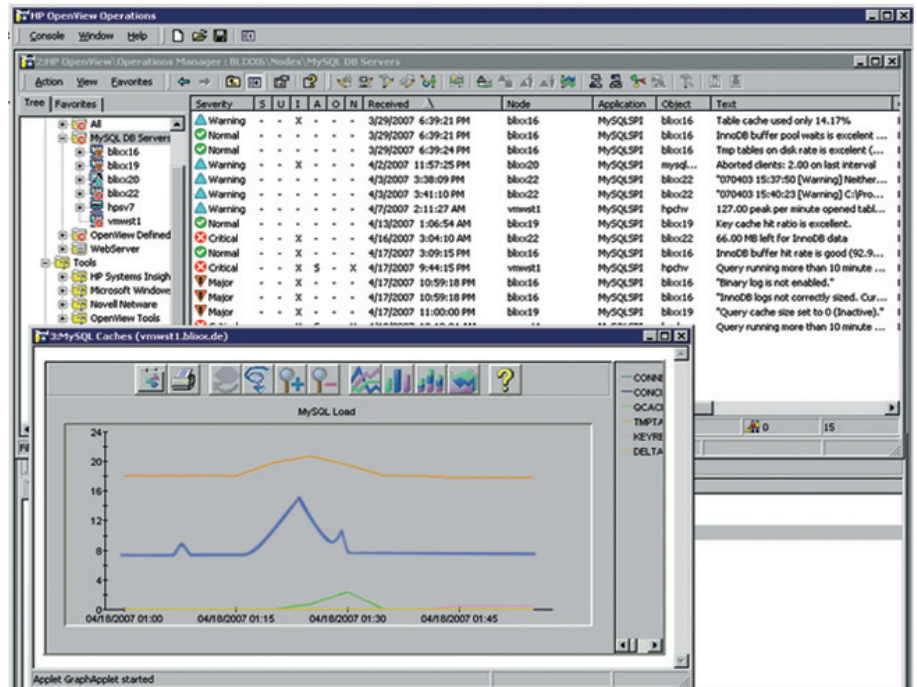
HP OM

Datasheet



Key Features

- Operations Manager for Unix and OM for Windows support.
- Support for a wide range of platforms (Windows, Linux, HP-UX, SunOS).
- Support for multiple Versions of the MySQL Database (v4.1 and later).
- Support of multiple MySQL database server instances running on the managed node.
- Easy and fast deployment and configuration.
- Flexible and powerful Collector Engine.
- Calculation of Average, Peak, Delta values.
- More than 50 raw and aggregated performance metrics available



- Detection of suspicious configuration and runtime values.
- Detection of security relevant Events.
- Status and Resource Monitoring.
- Logfile Monitoring
- Performance data collection for data correlation, thresholding, trending, reporting.

- New:** Configuration change monitoring with alerting, change tracking and comparison.
- New:** Support of the OMU Server on SUN Solaris.
- New:** Store Performance data to structured file for flexible integration possibilities.

Covered Areas

- MySQL Database Server Status Metrics.
- Database Resource Utilization.
- System Resource Utilization.
- Database KPIs (Key Performance Indicators).
- Supporting Database Metrics for advanced correlations.
- Configuration sanity checks.
- Active replication monitoring to measure and alert on replication delays.
- RowCount monitor to track queue tables.
- Automatic detection and capture of long running queries.
- New:** Business Process Monitor to run any SQL statement and threshold on response time or returned value.

Supported Platforms and Servers

- HP Operations Manager on HP-UX, Sun Solaris, Windows**
 - HP OM Unix v7.1, v8.x (DCE and HTTP based agents)
 - HP OM Windows v7.5
 - HP OM Windows v8.1
- Operating Systems for MySQL Server**
 - Windows Professional
 - Windows Server
 - Linux RedHat, Novell-Suse (according to the OM Agent Support Matrix)
 - HP UX
 - SUN Solaris
- MySQL Databases**
 - MySQL Database 4.1
 - MySQL Database 5.0
 - MySQL Database 5.1
- Reporting**
 - HP Service Reporter 3.7
 - HP Service Reporter 3.8



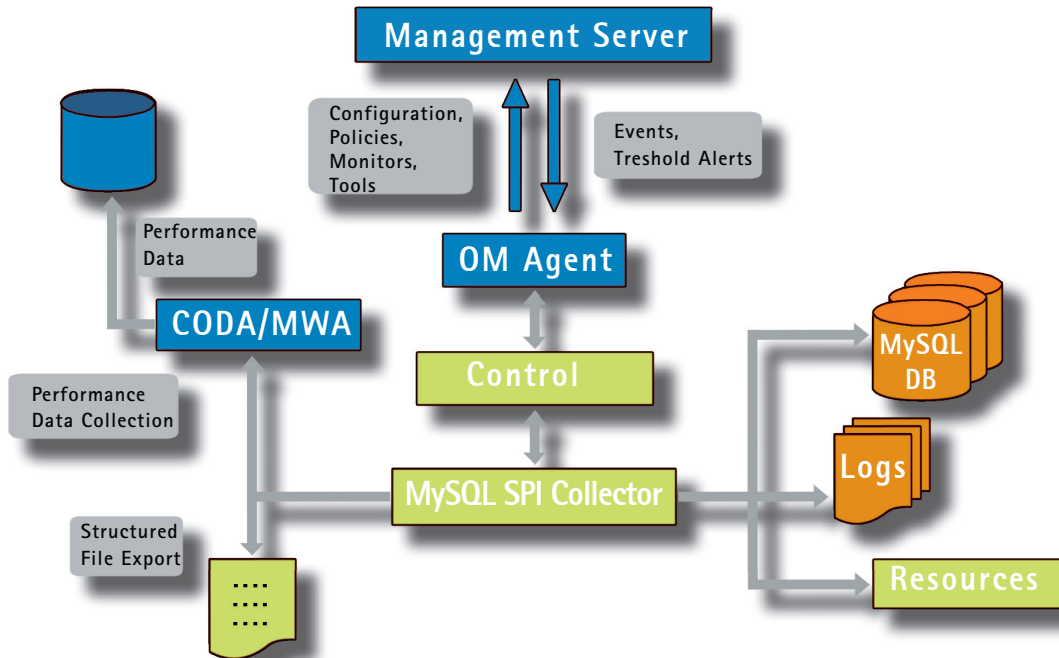
netage solutions GmbH
Neumarkter Str. 22
81673 München
Germany

www.netage-solutions.com
fon: +49(0)89/666 584-0
fax: +49(0)89/666 584-11
email:order@netage-solutions.com

HP Partnerlink:
<http://h20229.www2.hp.com/partner/directory/emea>



Architecture



Overview

Monitoring

The Java based SPI for MySQL Databases can be installed on heterogeneous MySQL database server systems and configured to monitor multiple MySQL database instances on each database server.

HP Operations

The SPI integrates it's built in intelligence with the OM Agent that is installed on the MySQL Server. It uses the standard Operations integration mechanisms. The monitoring of remote MySQL database instances is possible, but offers a limited set of capabilities.

Metrics

Most of the provided metrics are aggregated or calculated based on multiple variables from the MySQL database and on monitoring intervals.

Threshold/ Performance data

The history data collection of performance metrics has an independent schedule interval from the threshold monitoring and can be disabled or enabled at any time. This allows the collection of performance statistics even during planned outage periods in which the thresholding and alarming is turned off.

Monitors

The calculated and aggregated values are dynamically recalculated based on each customer's specific scheduled monitoring interval. This allows the SPI to easily handle metrics representing States, Counters, Gauges and similar, while providing full flexibility for the configuration of the monitors.