



boom

business open operations manager

The logo for 'boom' is written in a bold, blue, lowercase sans-serif font.

business open operations manager

The logo for 'netage solutions' features a stylized blue arrow pointing left, followed by the word 'netage' in blue and 'solutions' in black, both in a sans-serif font.

business open operations manager (**boom**)

boom ...

- is a **process-oriented** solution for system monitoring
- provides **effective** and **intelligent** monitoring of systems
- is a **cross-platform** solution

The logo for 'boom' is written in a bold, blue, lowercase sans-serif font.

business open operations manager

The logo for 'netage solutions' features a stylized blue arrow pointing left, followed by the word 'netage' in blue and 'solutions' in black, both in a sans-serif font.

business open operations manager (*boom*)

boom ...

- can be used for monitoring operating systems, applications, databases etc.
- is based on a Service Oriented Architecture (SOA)
- is developed in Java and Eclipse RCP platform
- uses encrypted communication protocols
- is a commercial offering (COTS) with professional consulting and support

The logo for 'boom' is written in a bold, blue, lowercase sans-serif font.

business open operations manager

The logo for 'netage solutions' features a stylized blue arrow pointing left, followed by the word 'netage' in blue and 'solutions' in black, both in a sans-serif font.

The *boom* Editions

- ***boom*** exists in two editions:
 - ***boom100*** for evaluation purposes and limited scope environments
(free license, subscription support)
 - ***boom enterprise*** for business-critical environments with full functionality
- **Switching between the two versions is possible at anytime**
 - **without a new installation** or
 - **data loss**just by changing the license key.

The logo for 'boom' is written in a bold, blue, lowercase sans-serif font.

business open operations manager

The logo for 'netage solutions' features a stylized blue arrow pointing left, followed by the word 'netage' in a bold, blue, lowercase sans-serif font, and 'solutions' in a bold, black, lowercase sans-serif font below it.

The *boom* Architecture

- *boom* is a cross-platform operations management solution with maximum platform compatibility.
- Agent-based, multi-tier architecture
- The agent's intelligence allows to minimize network traffic
- Every agent can take the role of a:
 - „Monitoring Station“ for local system monitoring.
 - or provide an agent-less monitoring via the network.
- Environments with firewalls, DHCP and NAT are natively supported
- Intelligent UI (user-interface) clients available on most known platforms

The logo for 'boom' is written in a bold, blue, lowercase sans-serif font.

business open operations manager

The logo for 'netage solutions' features a stylized blue arrow pointing left, followed by the word 'netage' in blue and 'solutions' in black, both in a sans-serif font.

The *boom* configurations

- **Role-based configuration**
 - Simple creation and splitting of responsibilities
 - Gives perfect overview of complex environment to management

- **The powerful filtering and correlation allows**
 - Effective consolidation of hundreds of thousands messages,
 - Simplification and efficiency of IT-Administration,
 - Error only (exception-based) alarming or
 - Active status (state-based) alarming of monitoring objects.

The logo for 'boom' is written in a bold, blue, lowercase sans-serif font.

business open operations manager

The logo for 'netage solutions' features a stylized blue arrow pointing left, followed by the word 'netage' in blue and 'solutions' in black, both in a sans-serif font.

The *boom* configurations

- Open interfaces allows easy integration for:
 - Own monitoring applications,
 - Scripts
 - Management Plug-ins (MPIs).

The logo for 'boom' is written in a bold, blue, lowercase sans-serif font.

business open operations manager

The logo for 'netage solutions' features a stylized blue arrow pointing left, followed by the word 'netage' in blue and 'solutions' in black, both in a sans-serif font.

Key Features (1)

- Many platforms are supported:
 - Apple MacOS X
 - SUN Solaris, HP-UX, FreeBSD
 - Linux (SuSE, Red Hat, etc)
 - Microsoft Windows Server und Clients
 - VMWare ESX

The logo for 'boom' is written in a bold, blue, lowercase sans-serif font.

business open operations manager

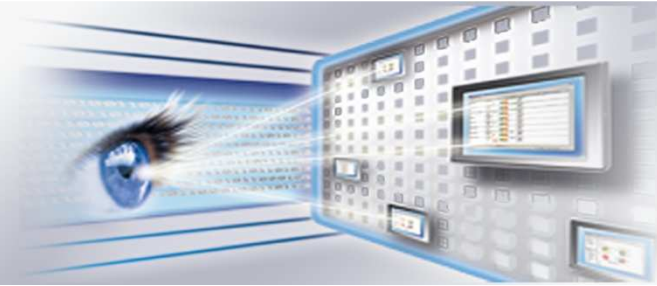
The logo for 'netage solutions' features a stylized blue arrow pointing left, followed by the word 'netage' in blue and 'solutions' in black, both in a sans-serif font.

Key Features (2)

- System or User role-based configurations
- Policy management with versioning
 - With possibilities to compare and
 - Merge.
- Central management and distribution of
 - Policies,
 - Monitor scripts and
 - Binariesto the agents.

The logo for 'boom' is written in a bold, blue, lowercase sans-serif font.

business open operations manager

The logo for 'netage solutions' features a stylized blue arrow pointing left, followed by the word 'netage' in a bold, blue, lowercase sans-serif font, and 'solutions' in a bold, black, lowercase sans-serif font below it.

Key Features (3)

- Central repository of configuration and instrumentation
- System information and inventory with
 - versioning
 - alarming
- Centralized storage of performance data
- Performance graph tools to show history of monitors and performance data
- Powerful correlation and filtering

The logo for 'boom' is written in a bold, blue, lowercase sans-serif font.

business open operations manager

The logo for 'netage solutions' features a stylized blue arrow pointing left, followed by the word 'netage' in blue and 'solutions' in black, both in a sans-serif font.

Key Features (4)

- The stand alone rich UI client application with decentralized processing and analytic logic
- Integrated ‚Hotspot‘ und ‚Monitor History Graphs‘
- Configurable
 - Automatic or
 - Manualactions on the Remote-Systems.
- Deployment of policies, binaries on running systems without restart.
- Hot-deployment of java based monitors.
- Full remote control of managed Agents

The logo for 'boom' is written in a bold, blue, lowercase sans-serif font.

business open operations manager

The logo for 'netage solutions' features a stylized blue arrow pointing left, followed by the word 'netage' in a bold, blue, lowercase sans-serif font, and 'solutions' in a bold, black, lowercase sans-serif font below it.

Key Features (5)

- System tools (like UNIX: top, ps, df, sar, ...) can be easily used as monitors.
- Open APIs for the integration of roll-your-own monitors
- Existing monitoring configurations (policies, scripts, and programs) of
 - Nagios®
 - HP Operations Manager for Unixcan be easily re-used or converted.

boom

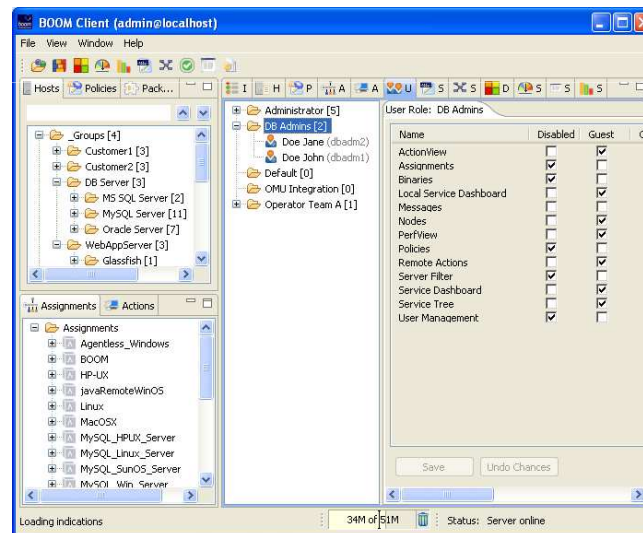
business open operations manager



netage solutions

boom client (GUI)

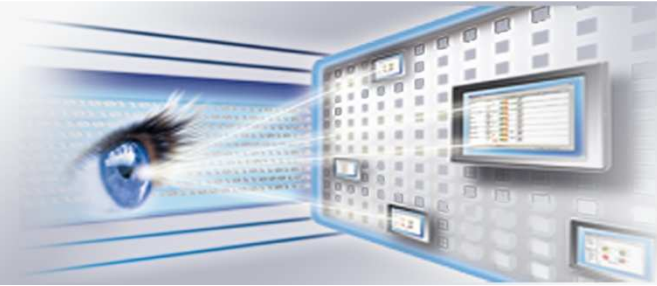
- The **intuitive** user client,
- based on well-known **standards**: CIM, OpenGroup, DMTF



- allows to re-use existing knowledge of IT monitoring in an organization.

The logo for 'boom' is written in a bold, blue, lowercase sans-serif font.

business open operations manager

The logo for 'netage solutions' features a stylized blue arrow pointing left, followed by the word 'netage' in a bold, blue, lowercase sans-serif font, and 'solutions' in a bold, black, lowercase sans-serif font below it.

System requirements for *boom* Server und Agent

- *boom* has **minimal requirements** for a **maximum coverage** of existing platforms and operating systems.
 - **Agent:**
 - Java Runtime Environment(JRE) 1.5 or higher
(The Agent is running on every platform where SUN-compatible java runtime available.)
 - **Server:**
 - Java Runtime Environment(JRE) 1.5 or higher,
 - Databases
 - MySQL 5.x
 - Oracle 10.x / 11.x

The logo for 'boom' is written in a bold, blue, lowercase sans-serif font.

business open operations manager

The logo for 'netage solutions' features a stylized blue arrow pointing left, followed by the word 'netage' in blue and 'solutions' in black, both in a sans-serif font.

System requirements for the Client / User Interface

- **Client / User Interface:**
 - Java Runtime Environment(JRE) 1.5 or higher
(The Eclipse RCP has wide range of supported platforms)
 - HP-UX (ia64), IBM AIX (ppc), Linux (x86_32, x86_64)
 - Mac OS/X for x86, carbon und cocoa
 - Microsoft Windows for x86_32 und x86_64
 - SUN SunOS 10 / Open Solaris for SPARC und x86

The logo for 'boom' is written in a bold, blue, lowercase sans-serif font.

business open operations manager

The logo for 'netage solutions' features a stylized blue arrow pointing left, followed by the word 'netage' in a bold, blue, lowercase sans-serif font, and 'solutions' in a bold, black, lowercase sans-serif font below it.

Standard configurations for Monitors

- **boom** contains many **ready-to-use configurations** for
 - Monitoring: System Resources (i.e.: CPU, Disk, IO, Memory, Swap, Network, Processes, Syslog, SecureLogs, Event Logs, Volume Groups, ...)
 - VMWare ESX Console und Guest Resource Monitoring
 - Logfile Monitoring und Log Parsing (message logs, Apache error log, ESX logs, ...)
 - Transactional (Expect) Log File Monitoring

The logo for 'boom' is written in a bold, blue, lowercase sans-serif font.

business open operations manager

The logo for 'netage solutions' features a stylized blue arrow pointing left, followed by the word 'netage' in a bold, blue, lowercase sans-serif font, and 'solutions' in a bold, black, lowercase sans-serif font below it.

Standard configurations for Monitors

- **boom** contains many **ready-to-use configurations** for
 - Windows Event Log Monitoring und Parsing
 - WMI Monitoring (also remote from Unix and Windows Agents possible)
 - Syslog Monitoring und Parsing
 - SNMP Monitoring
 - SNMP Trap Monitoring und Parsing

The logo for 'boom' is written in a bold, blue, lowercase sans-serif font.

business open operations manager

The logo for 'netage solutions' features a stylized blue arrow pointing left, followed by the word 'netage' in a bold, blue, lowercase sans-serif font, and 'solutions' in a bold, black, lowercase sans-serif font below it.

Standard configurations for Monitors

- Many examples of monitors ready for **customization**:
 - JMX Monitoring of Web Application Servers:
 - Tomcat
 - JBoss
 - Glassfish
 - Weblogic
 - WebSphere
 - SNMP walk monitors
 - SNMP traps templates
 - Output Parser Monitor (OPM)
 - LogFileMonitor

The logo for 'boom' is written in a bold, blue, lowercase sans-serif font.

business open operations manager

The logo for 'netage solutions' features a stylized blue arrow pointing left, followed by the word 'netage' in a bold, blue, lowercase sans-serif font, and 'solutions' in a bold, black, lowercase sans-serif font below it.

Management Plug-Ins

- **Management Plug-Ins (MPIs)** for *boom* expand the possibilities for monitoring of specific applications and services.
- The **OS MPIs** included in all *boom* editions.
- The **Internet Services MPI** monitors availability und Performance of Internet Services i.e.: FTP, HTTP, LDAP, POP3, Radius, SFTP, SMTP, SSH, ...
- The **MySQL DB MPI** delivers availability, capacity, configuration, health, resource, security und response time monitoring.
- **Other MPIs:** MS Exchange, Hadoop/Ganglia Monitoring, Oracle, Tomcat.
- Additional MPIs from netage solutions and partners can be provided on request.

boom

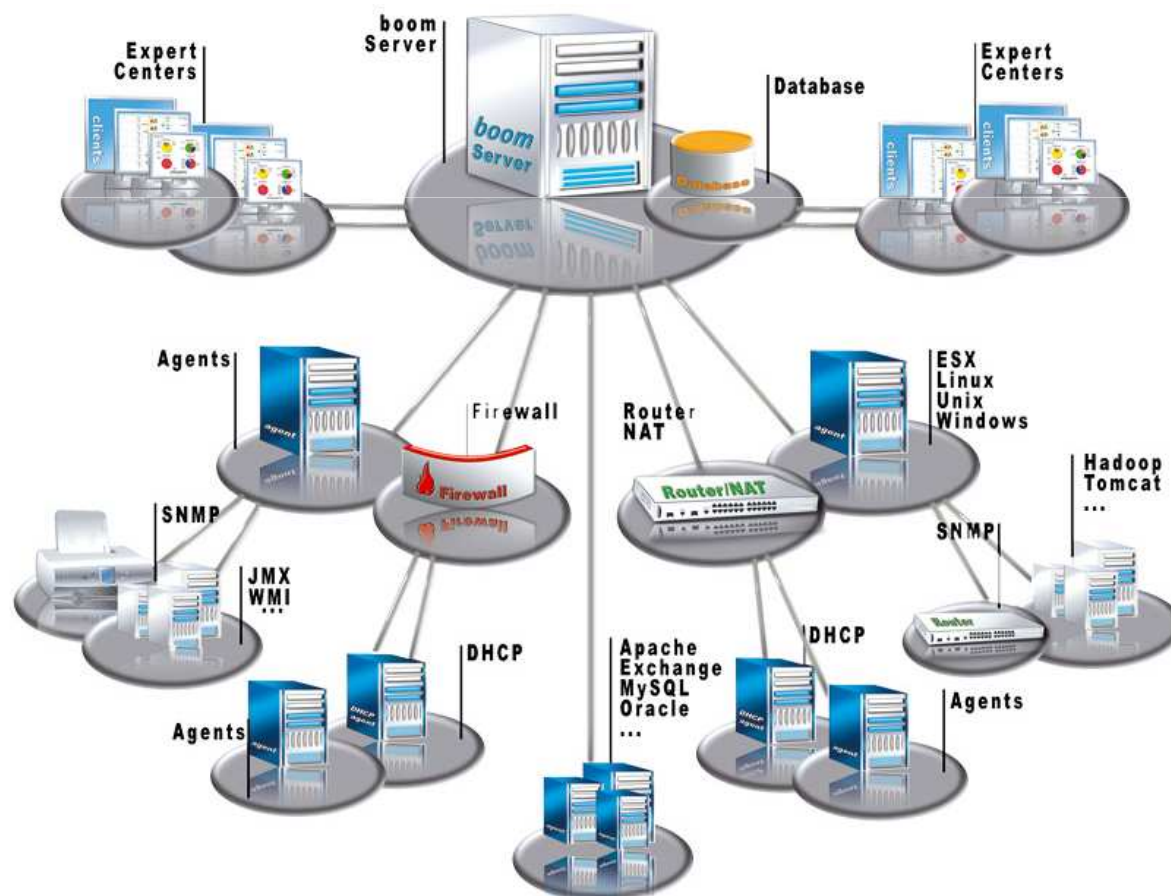
business open operations manager



netage solutions

boom IT-Architecture (Graphic)

The *boom* IT-Architecture is a combination of Server, Agent und Client / User Interface.



The logo for 'boom' is written in a bold, blue, lowercase sans-serif font.

business open operations manager

The logo for 'netage solutions' features a stylized blue arrow pointing left, followed by the word 'netage' in a blue sans-serif font and 'solutions' in a black sans-serif font below it.

boom IT-Architecture

- **Server with Management Database:**

central management of configurations, central processing of indications like de-duplication and automatic acknowledgement of Indications, agent heartbeats, user management, calculations of boom statistics, creation of performance graphs, server side filtering and forward of indications

- **Agents:**

de-centralized processing and monitoring functionality like scheduling and triggering of monitoring scripts, thresholding, local de-duplication, server heartbeats, if necessary local buffering of data.

Every agent can do local monitoring and/or remote monitoring of systems and devices where installation of other applications is not allowed or not possible.

The logo for 'boom' is written in a bold, blue, lowercase sans-serif font.

business open operations manager

The logo for 'netage solutions' features a stylized blue arrow pointing left, followed by the word 'netage' in a bold, blue, lowercase sans-serif font, and 'solutions' in a bold, black, lowercase sans-serif font below it.

boom IT-Architecture

- **boom Client (User Interface):**

Presentation part of the boom solution that provides de-centralized calculation, filtering, sorting of indications, creation of various specific views and dashboards, configuration management and control possibilities over existing infrastructure.

boom

business open operations manager

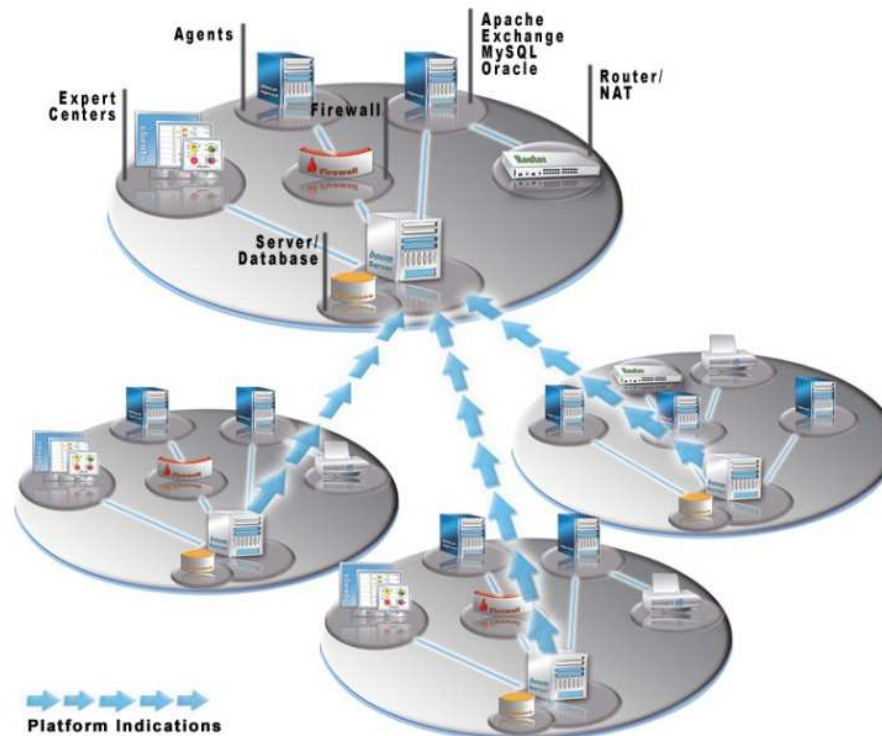


netage solutions

Hierarchical Servers (*boom* enterprise)

- The *boom* server offers flexible and intelligent forwarding of indications based on the filtering.

Distributed / Scalability Hierarchy



The logo for 'boom' is written in a bold, blue, lowercase sans-serif font.

business open operations manager

The logo for 'netage solutions' features a stylized blue arrow pointing to the left, followed by the word 'netage' in a bold, blue, lowercase sans-serif font, and 'solutions' in a bold, black, lowercase sans-serif font below it.

Cooperative Servers

- Filtering and forwarding functions enable the usage of boom server in different scenarios:
 - Central management of separated organizations/network,
 - Centers of Expertise,
 - Time/TimeZone based IT Centers,
 - Reserve systems
 - Scalability and load balancing
 - more.

boom

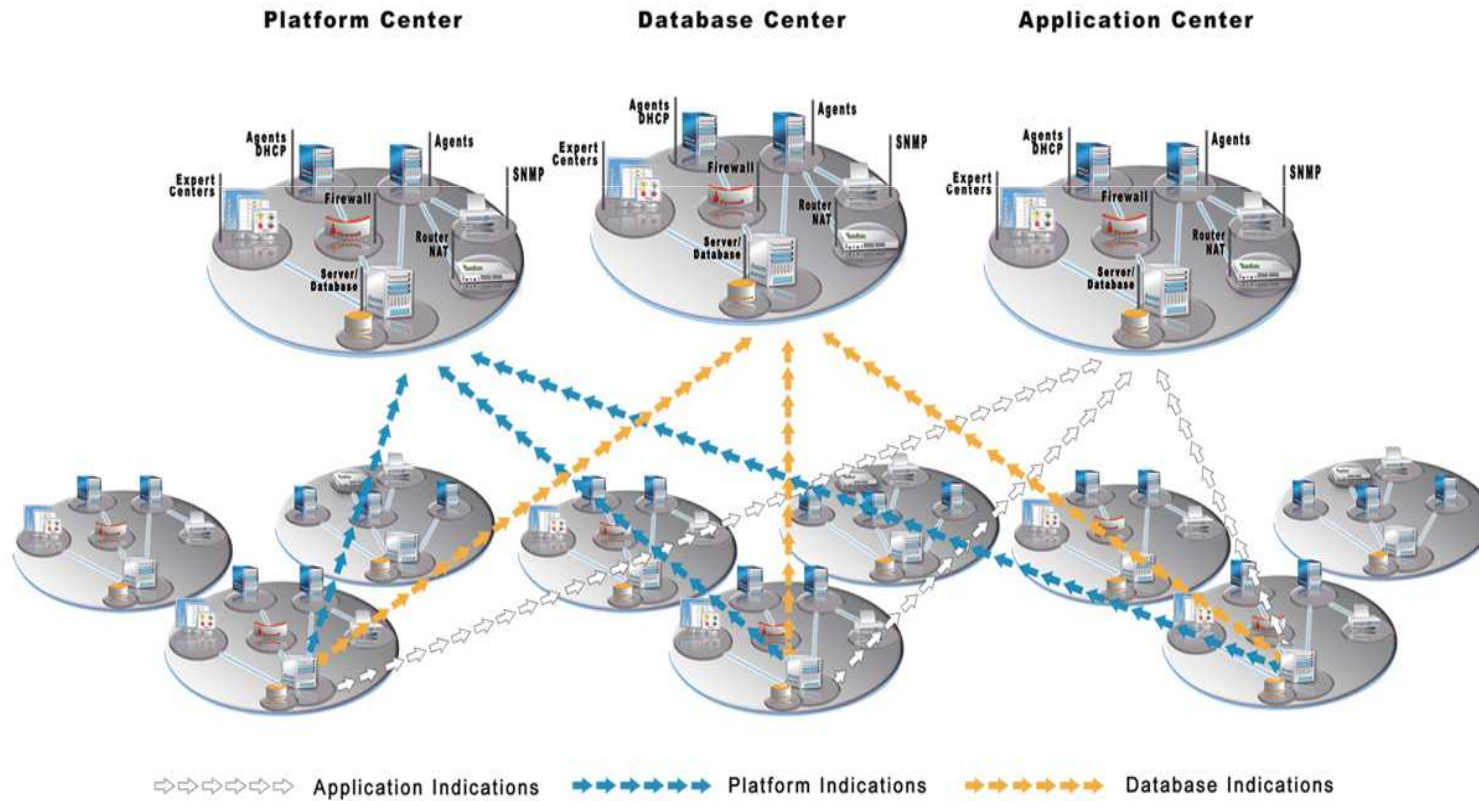
business open operations manager



netage solutions

Cooperating Servers

Centers of Expertise



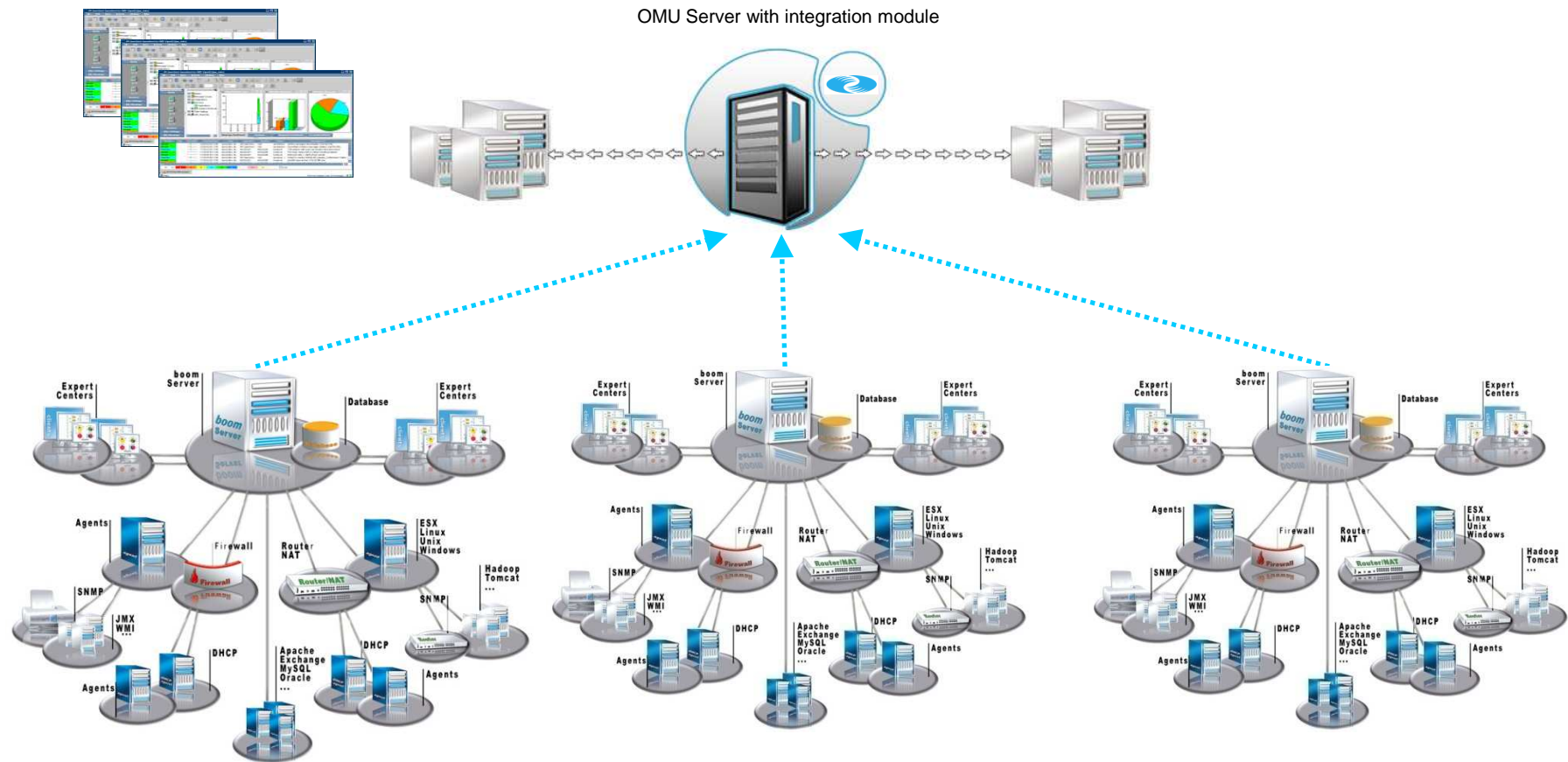
boom

business open operations manager



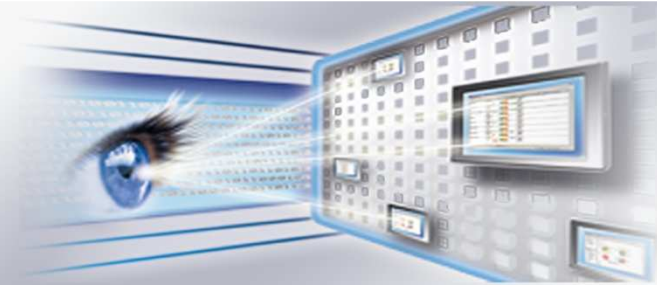
netage solutions

boom Satellite Servers (Graphic)



The boom logo is written in a bold, blue, lowercase sans-serif font.

business open operations manager

The netage solutions logo features a stylized blue arrow pointing left, followed by the word "netage" in a bold, blue, lowercase sans-serif font, and "solutions" in a bold, black, lowercase sans-serif font below it.

boom Satellite Server

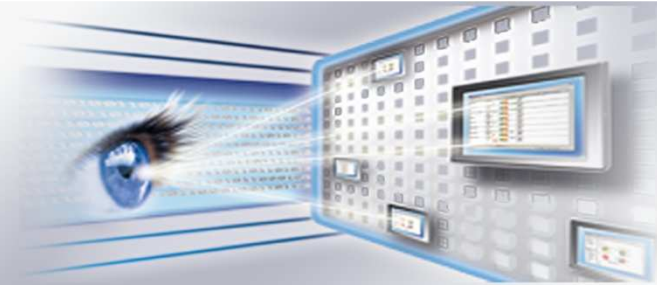
The **boom**-OMU integration module forwards indications to the HP Operations Manager. Typical scenarios are:

- **Scheduled side-by-side management**
Local IT departments can work during office hours with boom, outside this period, all Indications forwarded to OMU.
- **Scheduled OMU server select**
Indications are forwarded to different OMU server based on schedule.
- **Element Manager**
Only indications for certain system, applications, or groups will be forwarded to the OMU server.
- **Proxy Manager**
All indications will be forwarded to OMU and dropped from the boom server.

OMU Message / Monitor / Trap Policies can be imported into boom.

The logo for 'boom' is written in a bold, blue, lowercase sans-serif font.

business open operations manager

The logo for 'netage solutions' features a stylized blue arrow pointing left, followed by the word 'netage' in a bold, blue, lowercase sans-serif font, and 'solutions' in a bold, black, lowercase sans-serif font below it.

The *b2om* usage modes

The integration module supports the following scenarios:

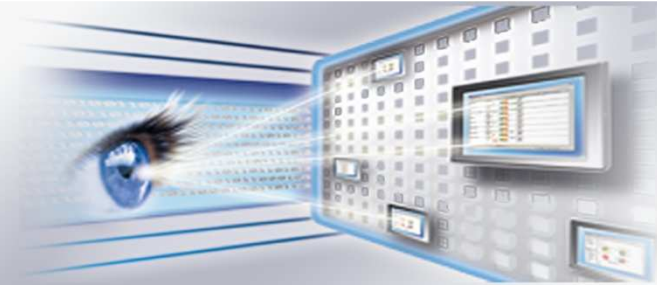
- ***b2om* (*boom* – HP Operations Manager Unix)**
 - **Proxy (Mode 0)**

Indications will be forwarded to OMU and deleted.
 - **Proxy (Mode 1)**

Indications will be forwarded to OMU and archived.

The logo for 'boom' is written in a bold, blue, lowercase sans-serif font.

business open operations manager

The logo for 'netage solutions' features a stylized blue arrow pointing left, followed by the word 'netage' in a bold, blue, lowercase sans-serif font, and 'solutions' in a bold, black, lowercase sans-serif font below it.

The *boom2boom* usage modes

- *boom2boom* (*boom - boom*)
 - **Slave (Mode 1)**

Indications are automatically archived after closing.
 - **Mirror (Mode 2)**

Indications are forwarded „with Control“. Actions, e.g.: “Close” will be synchronized between Source/Receiver Servers.
 - **Master (Mode 3)**

Indications are forwarded as “FYI”, control actions can be performed only on the source server. This allows administrators to create a backup or control servers.

The logo for 'boom' is written in a bold, blue, lowercase sans-serif font.

business open operations manager

The logo for 'netage solutions' features a stylized blue arrow pointing left, followed by the word 'netage' in a bold, blue, lowercase sans-serif font, and 'solutions' in a bold, black, lowercase sans-serif font below it.

Reference customers

- **Die Schweizerische Post (Swiss Post)**
 - Monitoring all post offices in Switzerland
 - More than 7.500 agents in production with a single server
 - Monitoring of operating systems, databases, and postal applications
 - Highly automated configuration rollout
- **German Government**
 - (Ministry cannot be named for contractual reasons)
- **Vodafone**
 - Heterogeneous monitoring environment
 - Legacy system consolidation across multiple locations and companies
 - Significant cost savings